



SPECIFICATION SHEET

PVE 160 PR

Powerful, Versatile and Efficient Piling Rig

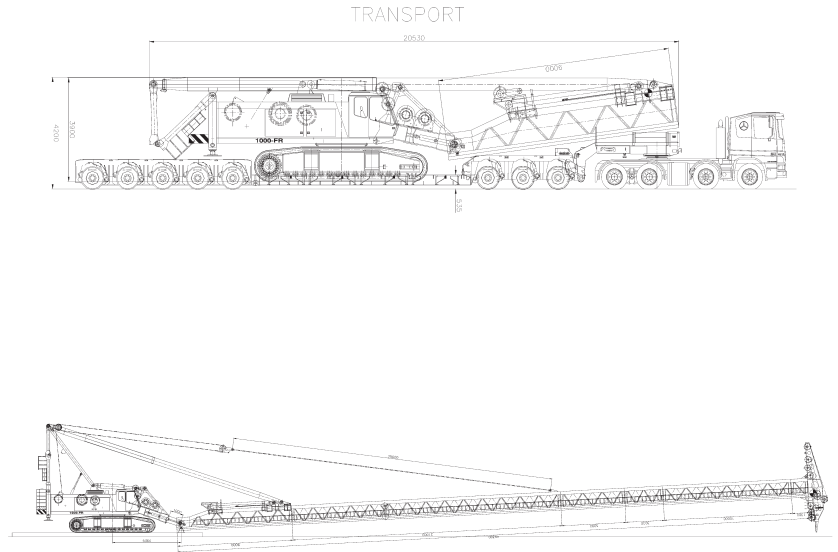
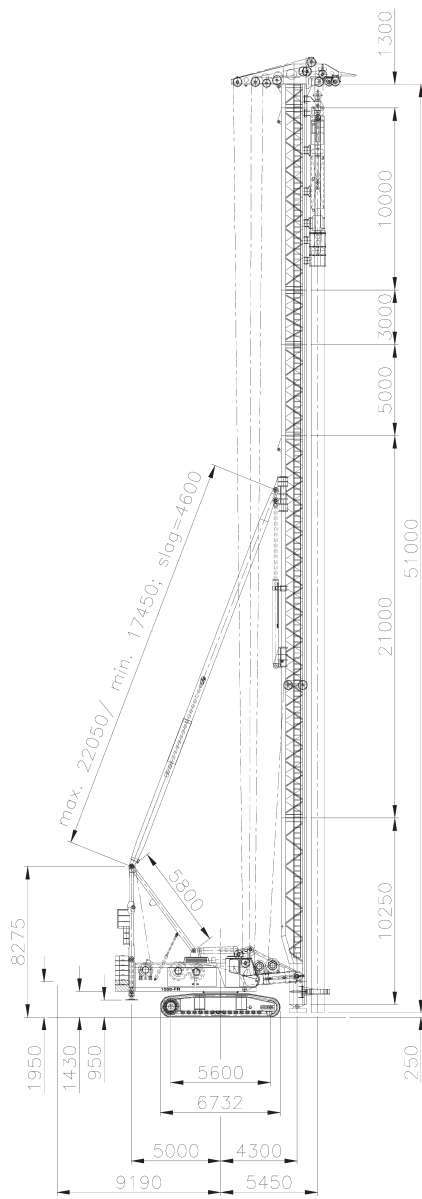
**High capacity
51m leader**

**Rexroth hydraulic
CAT engine**

**120tons pull up
New type of cabin**



PVE 160 PR



all dimensions are in millimeters

Technical specifications

Max. torque (drilling config.)	368,781 ft/lbs	(50 ton/m)
Capacity main winch	33,069 lbs	(15 ton) (8 sheaves)
Capacity pull down winch	33,069 lbs	(15 ton) (4 sheaves)
Capacity pile winch	33,069 lbs	(15 ton)
Capacity auxiliary winch	22,046 lbs	(10 ton)
Capacity sheaving winch	8,818 lbs	(4 ton)
Capacity erecting winch	27,557 lbs	(12,5 ton)
Max. leader length	167.32 ft	(51m)
Standard diesel engine	Caterpillar C13	
Hydraulic pumps	Bosch-Rexroth	
Hydraulic valve blocks	Bosch-Rexroth	
Transport width excl. tracks	11.48 ft	(3.500 mm)
Transport length	67.75 ft	(20.650 mm)
Capacity auxiliary winch	22,046lbs	(10 ton)
Capacity winch for man-lift	1,322 lbs	(0,6 ton)
Transport height excl. tracks	11.15 ft	(3.400 mm)
Transport weight excl. tracks	180,780 lbs	(82 ton)
Output diesel engine	350 kW / 475 HP	

